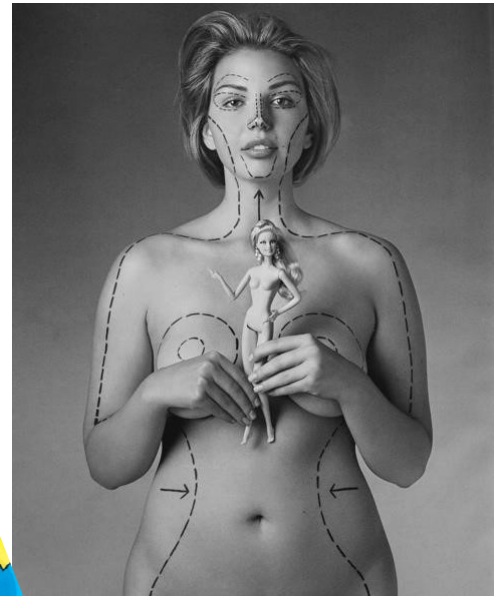




CWU's Accessibility Studies Program is focused on recognizing the range of abilities that are common in our population... but the common Barbie doll is an unintentional depiction of disability. Her unrealistic proportions suggest major functional problems!

By comparison, the Lammily dolls have the typical proportions of most college-aged humans.

This line of dolls is committed to social justice and identity development. The



dolls have careers and diverse characteristics.

CWU Accessibility Studies Program contributed to the kickstarter for one of the accessories: a wheelchair.



Join us for **Accessibility Studies** - a 20-credit online minor that enhances both your personal and your professional development!

Contact Dr. Naomi Petersen at NJP@cwu.edu
www.cwu.edu/accessibility-studies